

A. Software download

<https://tinkersphere.com/documents/ScrollLEDDisp.zip>

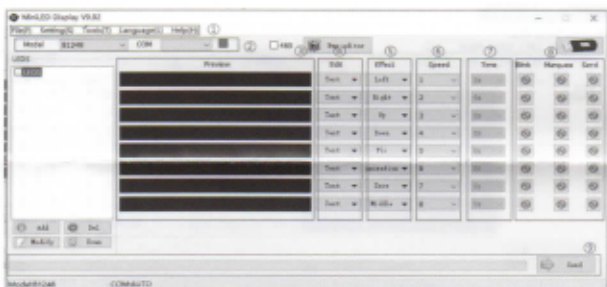
MiniLED9.92



MiniLED Display9.92

This is a green software, you can used directly

B. Software function introduction



- ① Menu: save text information, software language change, tools and help.
- ② Setting: select the product model, if the red change to green, it mean USB connection ok.
- ③ Preview: preview text information and image information that has been entered, it can input any languages text.
- ④ Edit: select text information and image editing interface
- ⑤ Effects: 7 effects, left, right, up, down, fixed, snow, middle.
- ⑥ Speed: 8 speed levels can be choose
- ⑦ Time: it is for C series products only
- ⑧ Selector: only selected programs can be sent (selected as green, not selected as red).
- ⑨ Send: if input all messages finish, then click "send".
(Note: Can not open the USB connection before 100% finished)

C. product model



→ The products model label on packing box

D. Connect computer / send content

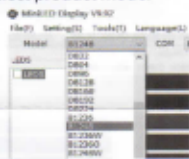
1. First we need to connect the computer to confirm whether the product is successfully connected



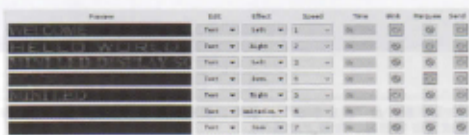
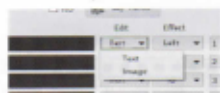
2. Select software languages



3. Select product model



4. Input messages or images



4. Click SEND button when the messages input finish, then will be OK